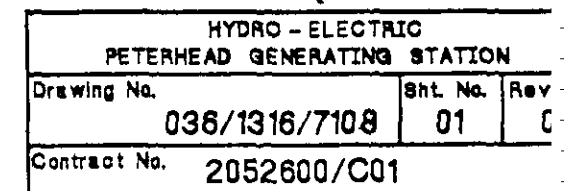


- 
- 0-400 PSIG  
0-27.6 BAR G
- 96FG-2B
- 96FG-2C
- 63FG-3
- 96FG-2A
- 20VG-1
- GFV-2
- GFV-1
- GPL-2
- GPL-1
- VENT TO ATM
- PC
- 0-400 PSIG  
0-27.6 BAR G
- PC
- GF
- VSR-1
- 96SR-1,2
- VH5-1
- CI
- C2
- OLT-2
- SEE TRIP OIL  
(ML ITEM #0418)
- PS
- 2-1
- R
- P
- 90SR-1
- B1
- B2
- D
- OD
- HI ΔP INDICATOR
- FH7-1
- GF
- VGC-1
- 96GC-1,2
- VH12-1
- CI
- C2
- PS
- 1-2
- R
- P
- 65GC-1
- B2
- B1
- D
- OD
- HI ΔP INDICATOR
- FH7-2



1	SYMB. PIPING	277A2415
ITEM	DESCRIPTION	DOCUMENT N°
LIST OF COMPLEMENTARY DOCUMENTS		

WEIGHT IN Kg		SIMILAR TO		242B9853.		Drawn	J.McCOLL	19/11/89.	SCALE		JOHN BROWN		John Brown Engineering Limited Glydebank, Dunbartonshire G81 1	
REV A	VALVE ADDED TO VGC-1 LINE.  J.McCOLL 26-7-90	REV B	PC ADDED TO VENT TO ATM. S.A.L. 29-1-91	REV		Checked	K. Williams	19/1/90	M.L. SECTION	0422				
						Approved			TITLE  DIAG. SCHEMATIC  PP- FUEL GAS.			DRG. No 0998-0422		R
						ENGINEERING APPROVAL						B12624.		
						Mech.								
						Elec.								
REV		REV		REV								SHEET No 1 OF 1 SHEETS		